



BlackthornGate



Luxury holiday lodges at the entrance to the
North Yorkshire Moors National Park

Welcome to our farm and Blackthorn Gate



Mike and Rita Corrigan, our family (Andrew, Owen, Liam and Ruth), our dogs (Bess, Milo and Meg), and our cats (Lizzy and Lulu), welcome you to Eastfields Farm.

Eastfields Farm extends over 230 acres on the border of the North Yorkshire Moors National Park. We bought it in 2001 and since then we have worked extremely hard at renovating and developing the buildings plus the land itself.

Whilst not farmers previously, we have always had a keen interest in nature, wildlife and the great outdoors. We have renovated the farmhouse, the old dairy building, grain store and stock barn. We have created three fishing and four wildlife ponds. In the last few years we have planted over 11,000 trees stretching over 7 hectares. These include willow, oak, ash, beech, wild cherry, hazel and others. We've restored and created over 6km of hedgerow, including blackthorn, hawthorn, hazel, holly and more! We've also planted nectar and pollen meadows plus created arable wildlife margins and lots of wild bird cover.

The creation of Blackthorn Gate, four luxury lodges with great views of Roseberry Topping,

is the latest stage in our development plans. We have a flock of around 100 pedigree Texel sheep, including 40 breeding ewes. One of our lodges takes dogs and we have a stable, so you can bring your own horse on holiday with you if you wish! Our working strips are ideal for horse riding. Wandering around on the farm you can see a number of animals and birds, including badgers, otters, weasels, stoats, deer, hares, little owls, lapwings, curlews and skylarks. We are also fortunate to be one of only four sites in the area to have nesting pairs of Oyster Catchers.

There are lots of things to do and many of points of interest on the farm and the surrounding area. Hopefully, this brochure will give you a flavour of what is on offer. We hope you will enjoy a new and memorable countryside holiday experience at Blackthorn Gate.

Mike and Rita Corrigan



Four fully equipped holiday lodges overlooking Roseberry Topping



Blackthorn Gate comprises four luxury holiday lodges - Curlew, Lapwing, Skylark and Chaffinch - with great views of Roseberry Topping. The lodges have been specifically designed and positioned with the huge windows at the front facing directly at Roseberry Topping so you can enjoy uninterrupted views of this glorious landmark!

Our eco-friendly lodges have also been designed to make your stay as comfortable and as enjoyable as possible. We have included a number of extra features that we hope will make a big difference to your break.

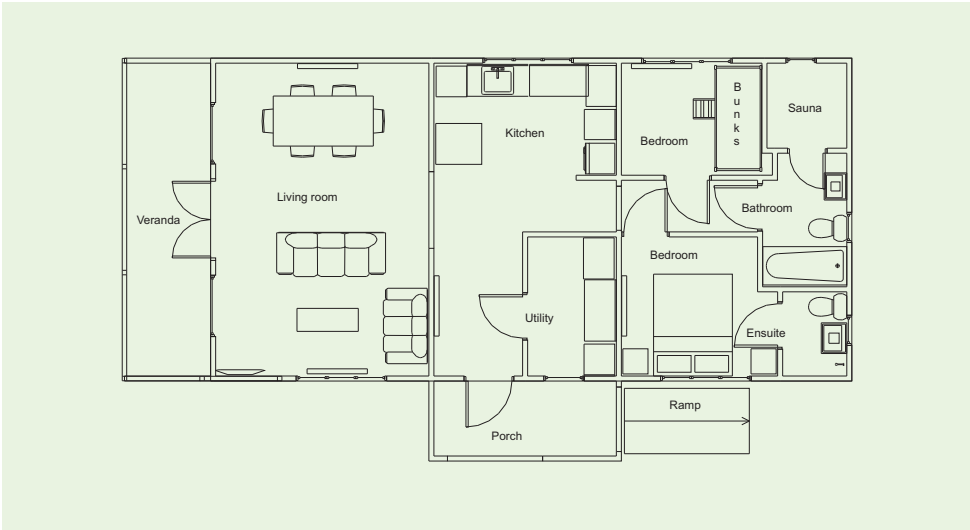
The lodges are spacious and airy. Curlew and Chaffinch are single storey and accommodate 4 people; Skylark and Lapwing have two floors and take 4-6 people. Each has a living room/dining room, a kitchen and two bedrooms. The master bedroom also has an en-suite shower room. There is a drying room in each lodge just in case you get a little wet on your adventures and, conversely, a veranda so you can sit out and enjoy the sunshine!

And if the sunshine isn't hot enough for you; your lodge is also equipped with your own private sauna to help take away all your stresses and strains. Also, so your lodge truly seems like a home from home we've included a flat screen television and dvd player plus there is a communal laundry room just in case you feel the need to wash or iron on your break! And, finally, in the unlikely event that you haven't already fully filled your day, we've installed a games room in the courtyard. So there are even more things for you to do. We hope to cater for your every need!

Single storey



Curlew and Chaffinch are single storey lodges and accommodate 4 people.

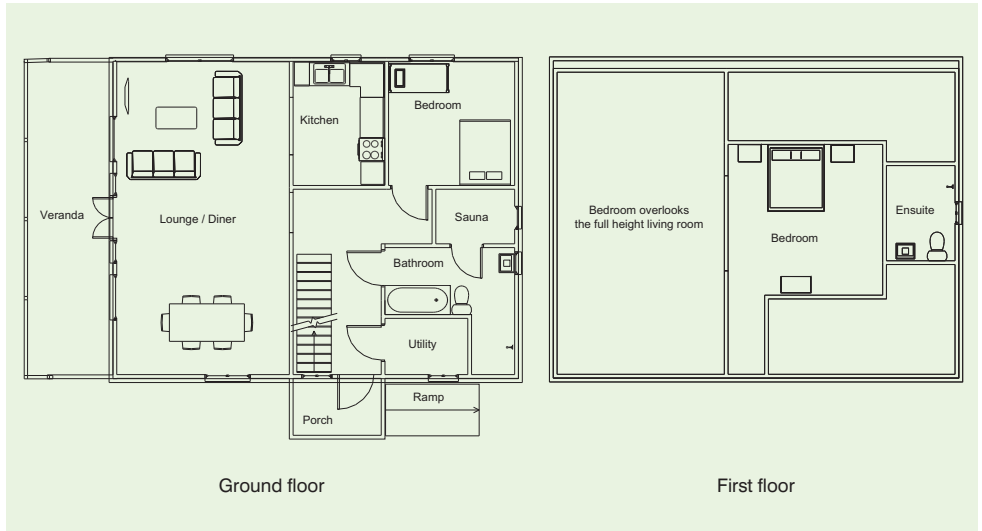




Two storey



Skylark and Lapwing have two floors and take 4 - 6 people.



Luxury lodges at the entrance to the North Yorkshire Moors National Park



Situated on the border of the North Yorkshire Moors National Park, Blackthorn Gate provides an exit from urban life and an entry into rural peace and tranquillity. You can stay at one of our four luxury lodges and enjoy spectacular views of Roseberry Topping plus, importantly, have the whole National Park stretching out in front of your door!

Blackthorn Gate is an outdoor delight. You can enjoy exclusive fishing access to the farm's three fully stocked ponds. You can walk on the public footpaths that cross the farm, just a short distance from your door. You can seek out the many birds and other wildlife that live on the farm. Or you can just sit back and soak up the tranquility.

If you wish, there is little need to use your car once you arrive. The fishing ponds are here, as are footpaths and wildlife. There are three restaurants a short distance away. However, there are also a wealth of local attractions to visit if you wish. The whole of the North Yorkshire Moors National Park is on your doorstep! The moors, the coastline, the market towns, the attractions and more!

Three fishing ponds solely for the use of Blackthorn Gate guests.

One of our many projects at Eastfields Farm over the last few years has been the creation of seven ponds. Four are wildlife ponds, for the use of insects and birds only, but the three other ones are fishing ponds - fully stocked and ready to go!

The great point of difference for fishing at Eastfields Farm is that these ponds are for private fishing only. They are not open to the public. We are keeping them solely for the use of our Blackthorn Gate guests and selected friends.

We dug out the ponds in 2006 and shortly afterwards stocked them with a mixture of carp, bream, tench, chub, roach and crucian carp. The fish, initially weighing between 1lb and 3lb, have been happily swimming around ever since, eagerly awaiting the arrival of anglers from the Blackthorn Gate lodges!



Walk to your heart's content!

There really are an incredible number and variety of walks just a short distance from your lodge at Blackthorn Gate.

The North Yorkshire Moors National Park has some of the finest landscapes and walking in Britain. It has a character all of its own. You can choose between the moors with miles of stunning heather and the coastline with towering sea cliffs and secluded beaches. Or, alternatively, you could combine both; in the same day if you wish!

You don't even need to travel to go walking! You are welcome to explore the private footpaths on Eastfields Farm at your leisure, including making use of the bird hides for some restful bird watching. There are also two public footpaths that cross the farm. One travels east to west and one goes north to south.

If you walk eastwards, within half an hour you will find yourself at the foot of Roseberry Topping. A short time afterwards you could be at its peak!

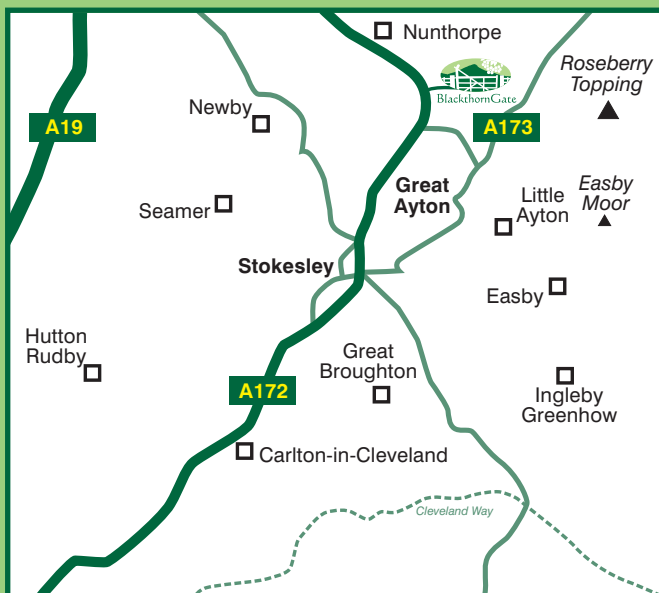
If you walk northwards, you will reach Nunthorpe Train Station. The station is located on the Esk Valley Line and a regular service operates to

Whitby with its host of attractions, including the opportunity to link up with the North Yorkshire Moors Steam Railway. Finally, if you walk southwards you will quickly reach Whinstone View, a very pleasant bistro where you can enjoy a leisurely drink and meal! The walking options really are endless

Never a dull moment!

There are a great number and variety of excellent local attractions. Whether you want to relax, exercise, have an adventure, delve into history, experience nature, go shopping or, simply, enjoy a meal out you will be spoilt for choice.

Within easy reach of Blackthorn Gate there is something for everybody to do. As you will have gathered by now, the whole of the North Yorkshire Moors National Park, with its myriad of attractions, is on our doorstep. However, it doesn't stop there. Other local attractions include Beamish Museum, Captain Cook's Birthplace Museum, Captain Cook Schoolroom Museum, Eden Camp, Flamingo Land, Hartlepool Maritime Experience, Nature's World, North Yorkshire Moors Railway, Saltburn Smugglers Heritage Centre, the Tees Barrage and much more!



From the South

From the A1, take the A168 towards Thirsk which becomes the A19. Stay on this road for around 15-20 minutes and then take the A172 towards Stokesley. At the second roundabout turn towards Middlesbrough. Blackthorn Gate is ½ mile past the next roundabout on the right hand side.

From the North

From the A19, take the A174 Parkway towards Whitby. Around 5 miles along this road, turn off onto the A172 also signposted towards Whitby. Go straight over at two sets of traffic lights then, at the first roundabout, turn towards Stokesley. Go straight over the next roundabout and Blackthorn Gate is ½ mile further on the left hand side.



BlackthornGate

Mike and Rita Corrigan, Blackthorn Gate, Eastfields Farm, Nunthorpe, Nr Stokesley, North Yorkshire TS7 0PB

Tel: 01642 324496 Fax: 01642 324496 Email: info@blackthorngate.co.uk

www.blackthorngate.co.uk